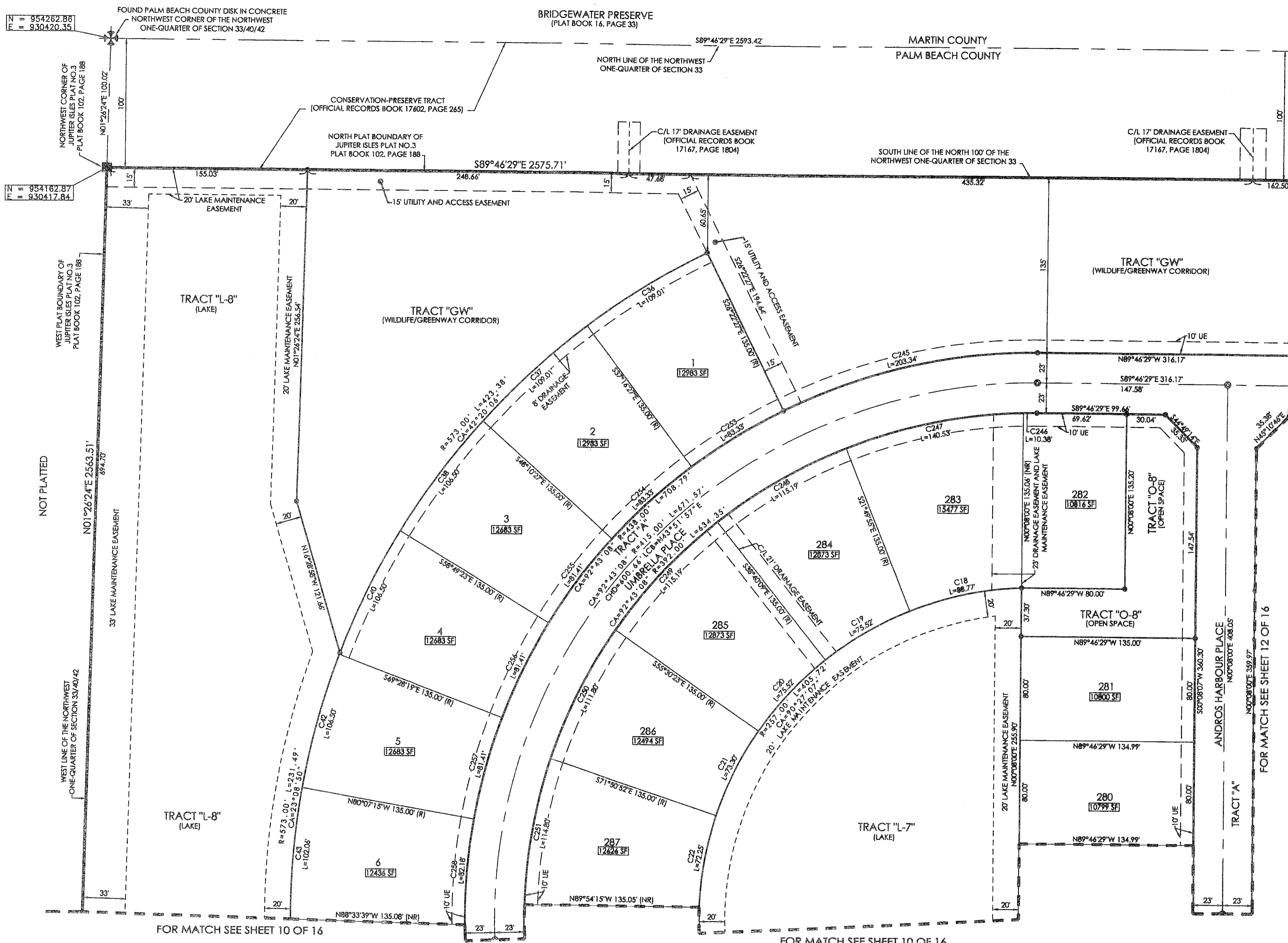


BEING A REPLAT OF JUPITER ISLES PLAT 1, JUPITER ISLES PLAT 2 AND JUPITER ISLES PLAT 3, RECORDED IN PLAT BOOK 102, PAGE 176, PLAT BOOK 102, PAGE 183 AND PLAT BOOK 102, PAGE 188, RESPECTIVELY, ALL LYING IN THE NORTHWEST ONE-QUARTER OF SECTION 33, TOWNSHIP 40 SOUTH, RANGE 42 EAST, TOWN OF JUPITER, PALM BEACH COUNTY, FLORIDA.

54



LEGEND table with symbols and definitions for radial lines, centerlines, drainage easements, utility easements, lake maintenance access easements, Florida Department of Transportation, radius distance, arc length distance, central angle, long chord bearing, chord distance, official records book, Palm Beach County, official records book, set permanent reference monument, found permanent reference monument, set permanent control point, offset zero lot line, and non-radial line.

SURVEYOR'S NOTES: 1. THE BEARING BASE FOR THIS PLAT IS S 89°56'44\"/>

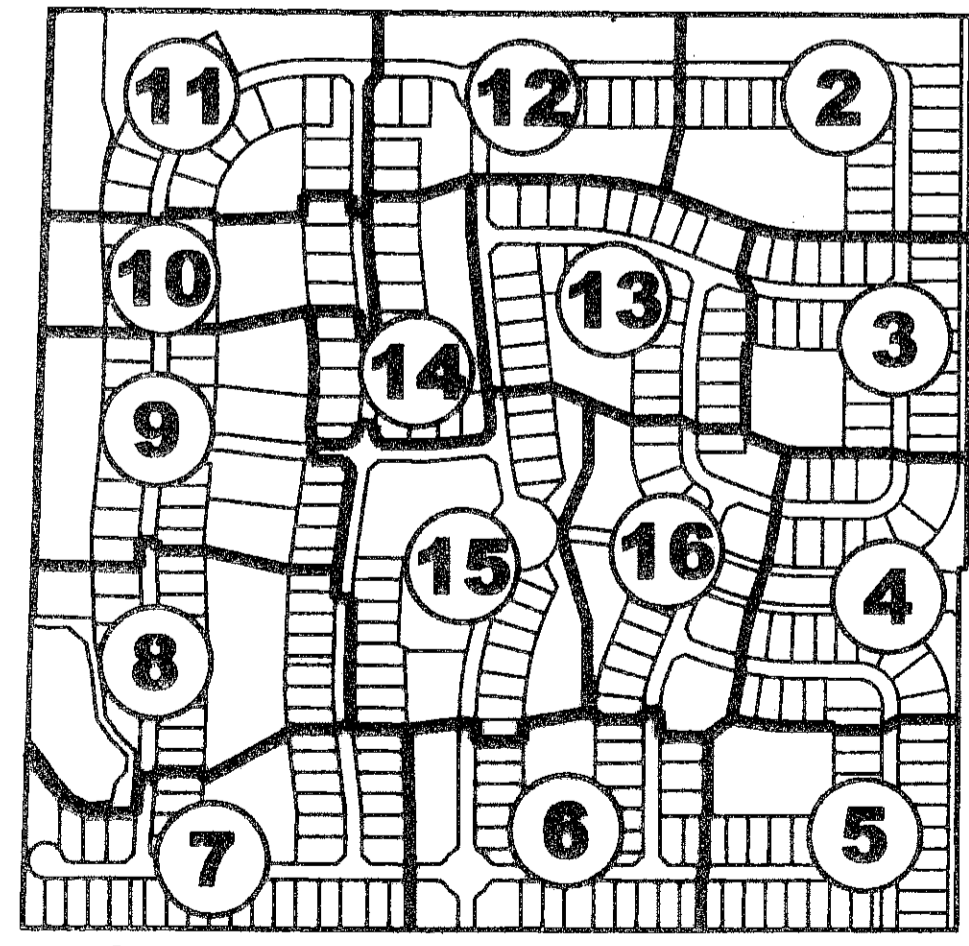
Table with columns: FILE: P256LOXNORTHPLAT, FB: , WO.NO.: P256, SCALE: 1\"/>

ASSOCIATED LAND SURVEYORS, INC. 4152 W. BLUE HERON BOULEVARD-SUITE 121 RIVIERA BEACH FLORIDA 33404 PHONE: (561) 848-2102 FAX: (561) 844-9659 EMAIL: ALLSSURVEY@AOL.COM

CURVE TABLE

Table with columns: Curve ID, CA, R, L, LCB, CHD. Lists curve data for C18 through C298.

SHEET INDEX (NOT TO SCALE)



11 DENOTES SHEET 11 OF 16

FOR MATCH SEE SHEET 12 OF 16

NOT PLATTED

FOR MATCH SEE SHEET 10 OF 16

FOR MATCH SEE SHEET 10 OF 16